



# Domino Ax-Series Product Manual Appendix Continuous Printing Pack

**Ax350i**

**Ax550i**

THIS PAGE INTENTIONALLY LEFT BLANK

# **DOMINO Ax-SERIES CONTINUOUS PRINTING PACK PRODUCT MANUAL APPENDIX**

This product manual appendix, Domino Part No. EPT037653, describes the features of the Domino Ax-Series continuous printing pack.

This product manual appendix is the source document for all translated versions. It is the “Original Instructions” for the purposes of the Machinery Directive.

Based on software version 01.00.0028 rev 39.

Operator’s are warned that it is essential to read, understand and act according to the information given in the Ax-Series Product Manual.

All rights reserved. No part of this publication may be reproduced, stored on a retrieval system, or transmitted in any form, or by any means, electronic, mechanical, photocopying, recording or otherwise, without the prior permission of Domino Printing Sciences plc.

Domino Printing Sciences plc. has a policy of continuous product improvement, the company therefore reserves the right to modify the specification contained in this product manual appendix without notice.

© Domino Printing Sciences plc. 2020.

For sales, service and inks please contact:

[www.buydomino.com](http://www.buydomino.com)

[www.domino-printing.com](http://www.domino-printing.com)

## **Domino UK Ltd.**

Bar Hill  
Cambridge CB23 8TU  
England  
Tel: 01954 782551  
Fax: 01954 782874

## **Domino North America**

1290 Lakeside Drive  
Gurnee IL.60031  
U.S.A.  
Tel: 847 244 2501  
Fax: 847 244 1421

# CONTENTS

	Page
AMENDMENT RECORD .....	5
INTRODUCTION .....	6
INSTALLATION .....	6
HOME SCREEN FEATURES .....	7
Label Length and Print Speed Statistics .....	7
Current Printing Label View .....	8
Reset Counter .....	9
LABEL CREATOR FEATURES .....	11
Initial Canvas Width Setting .....	11
Label Measurement Ruler and Label Width Value .....	12
X (mm) (Element Position Setting) .....	13
Label Distance Interval .....	14
CONTINUOUS BACKGROUND COUNTING .....	15
PRINT OPTIMISATION SETTINGS .....	16
Distance Interval Adjustment .....	16
Space Repeat .....	17
ADDITIONAL RASTERS .....	18

# AMENDMENT RECORD

**Amendment**

All parts at Issue 1

All parts at Issue 2

**Date**

January 2018

November 2020

# INTRODUCTION

*Note: Available for Ax350i/Ax550i printers only.*

Software requirements: Version 01.00.28 or higher.

The continuous printing pack installs additional features for printing long labels on high speed continuous print surfaces such as cable, wire and extrusion applications.

The continuous printing pack adds the following features to the printer:

- Improved visibility of long labels on the user interface home screen.
- Current speed and maximum speed values visible on the user interface home screen.
- Quick access to reset counter functions.
- Quick access to print optimisation settings to enable the pitch/gap between labels to be easily adjusted.
- Additional label creator features specifically designed to create long labels.
- Additional rasters for high speed printing.

The items listed in the table below are contained in the continuous printing pack:

Quantity	Item Description
1	USB Software Key

# INSTALLATION

To install the continuous printing pack on the printer:

- (1) Insert the continuous printing pack USB into a USB port on the printer cabinet or TouchPanel.
- (2) On the TouchPanel, wait for the install prompt to appear. Or, select *Home > Setup > Packs management*.
- (3) Select the appropriate *Install* button.
- (4) Follow the on screen instructions.
- (5) Remove the continuous printing pack USB.
- (6) To save the installation, press and hold the power button for two seconds and restart the printer.

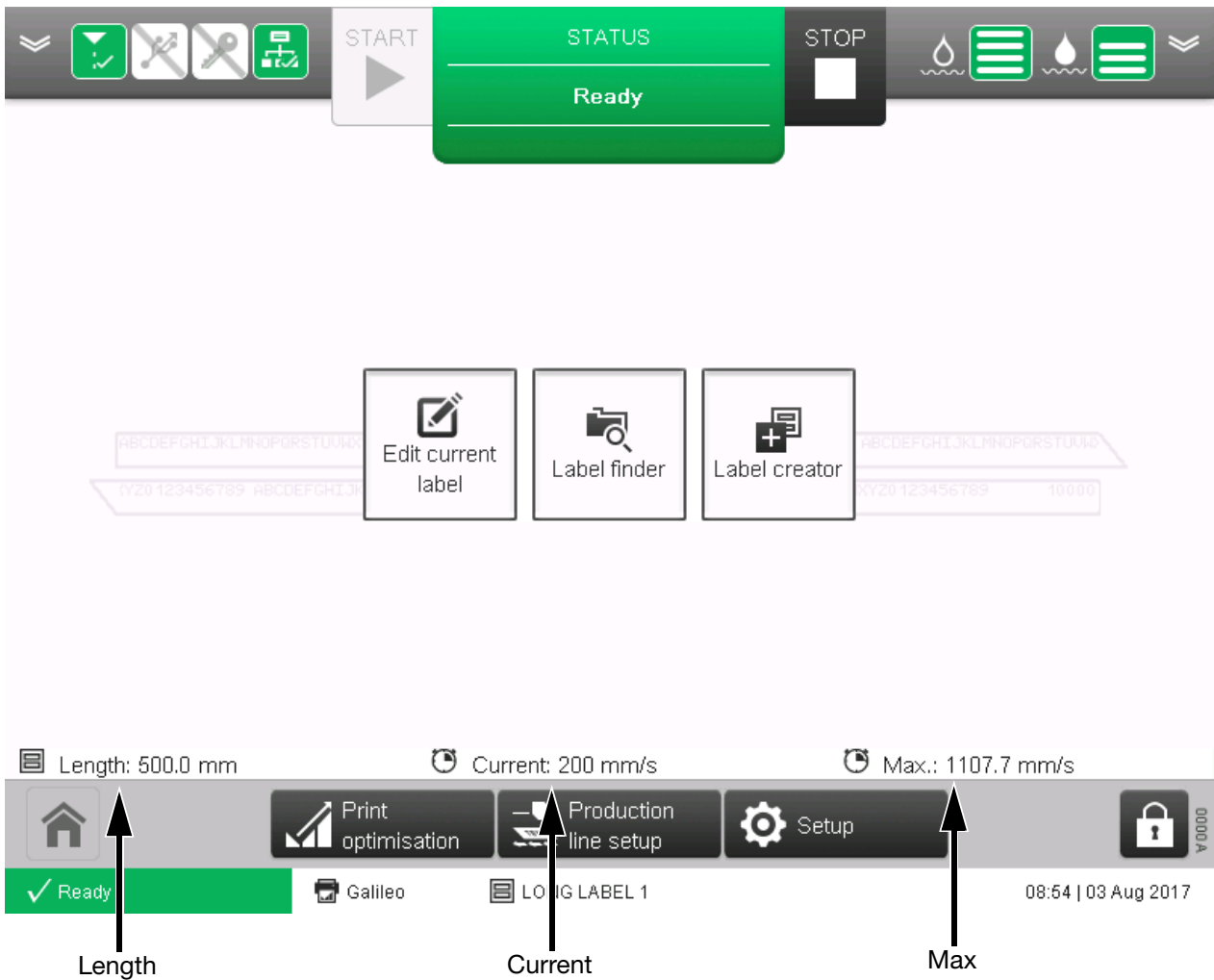
End of procedure.

# HOME SCREEN FEATURES

After the continuous printing pack has been installed, the home screen on the printer's user interface will be optimised with additional features for printing long labels. The additional home screen features are described on the next few pages of this document.

## Label Length and Print Speed Statistics

Three additional statistic values are displayed on the home screen. The additional statistic values are illustrated and described below.



*Home Screen*

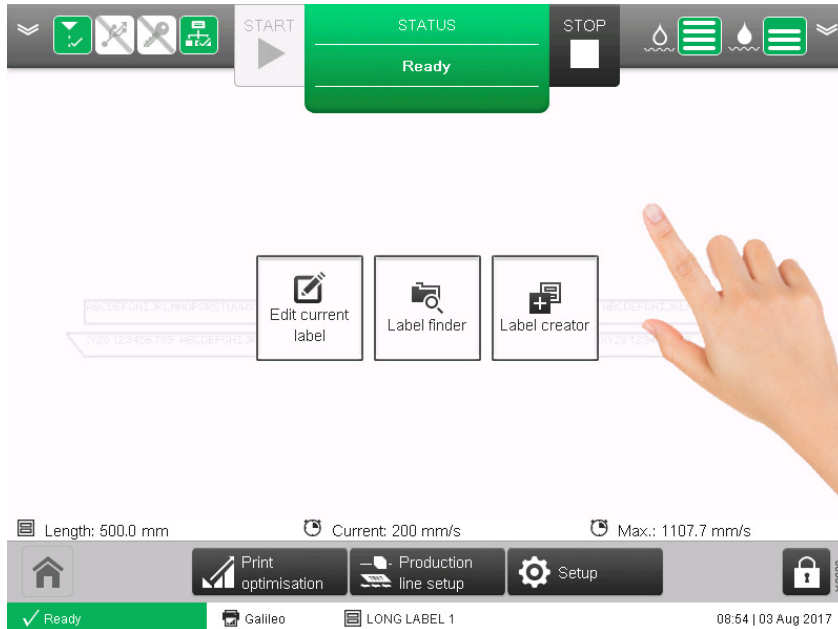
Statistic Name	Description
Length	The length of the current label in millimetres.
Current	The current printing speed.
Max	The maximum possible printing speed using the current label and settings.

## Current Printing Label View

The currently printing label can be viewed on the home screen. If the label is too long to fit on the screen, the label will be split onto multiple lines.

To view the currently printing label:

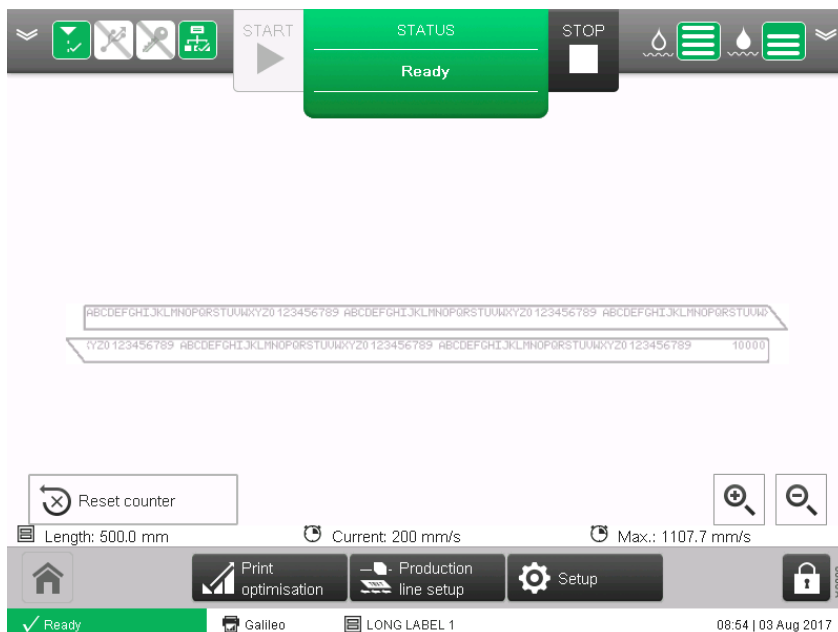
- (1) Select the background area of the home screen.



Home Screen

- (2) The currently printing label will now be shown on the user interface.

**Note:** The example below shows a label that is 500mm long. This label is too long to display on one line, so the label is split onto two lines.



Current Printing Label View

End of procedure.

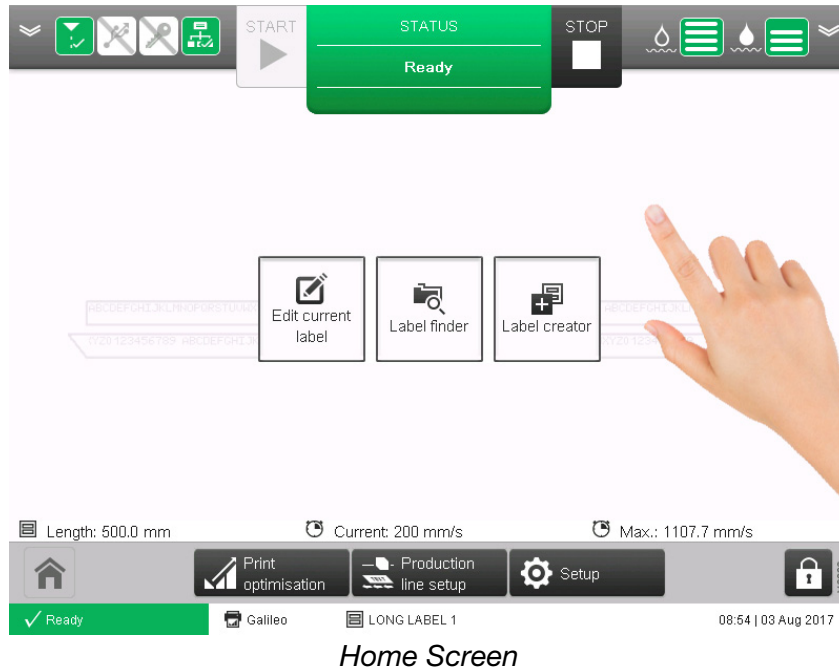
# Reset Counter

If the currently printing label includes one or more counter elements, a button on the home screen enables the user to quickly reset the counter during the production run.

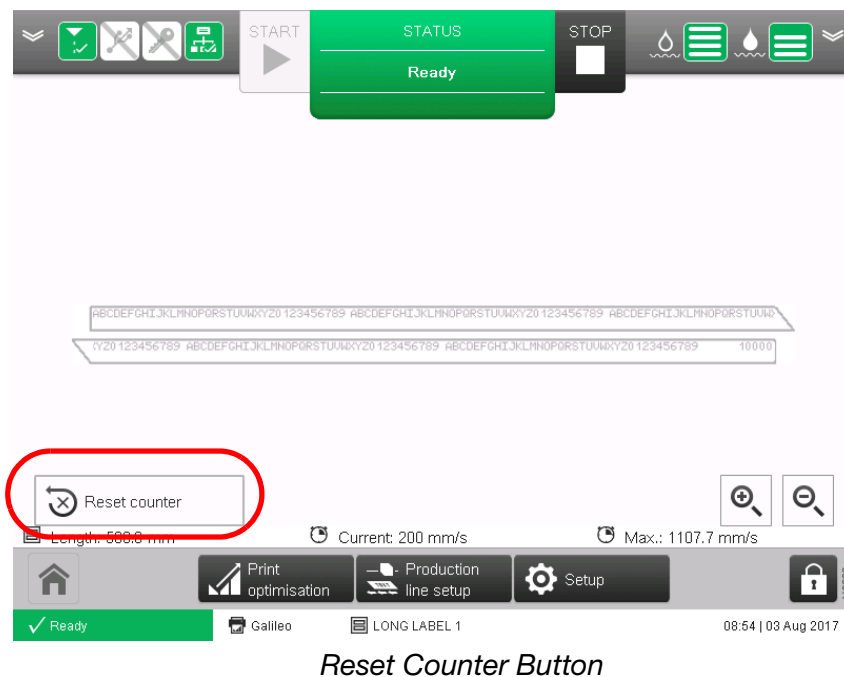
Counters can be reset to the counter's start value or to any user specified value.

To reset counters:


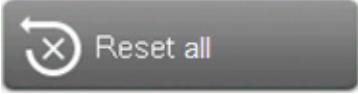

- (1) Select the background area of the home screen.



- (2) Select *Reset counter*.



(3) Select one of the three icons illustrated below:

Icon	Description
	Reset the counter to the counter's start value.
	If there is more than one counter in the label, reset all counters to their start values.
	Reset the counter to a new user specified value.

End of procedure.

# LABEL CREATOR FEATURES

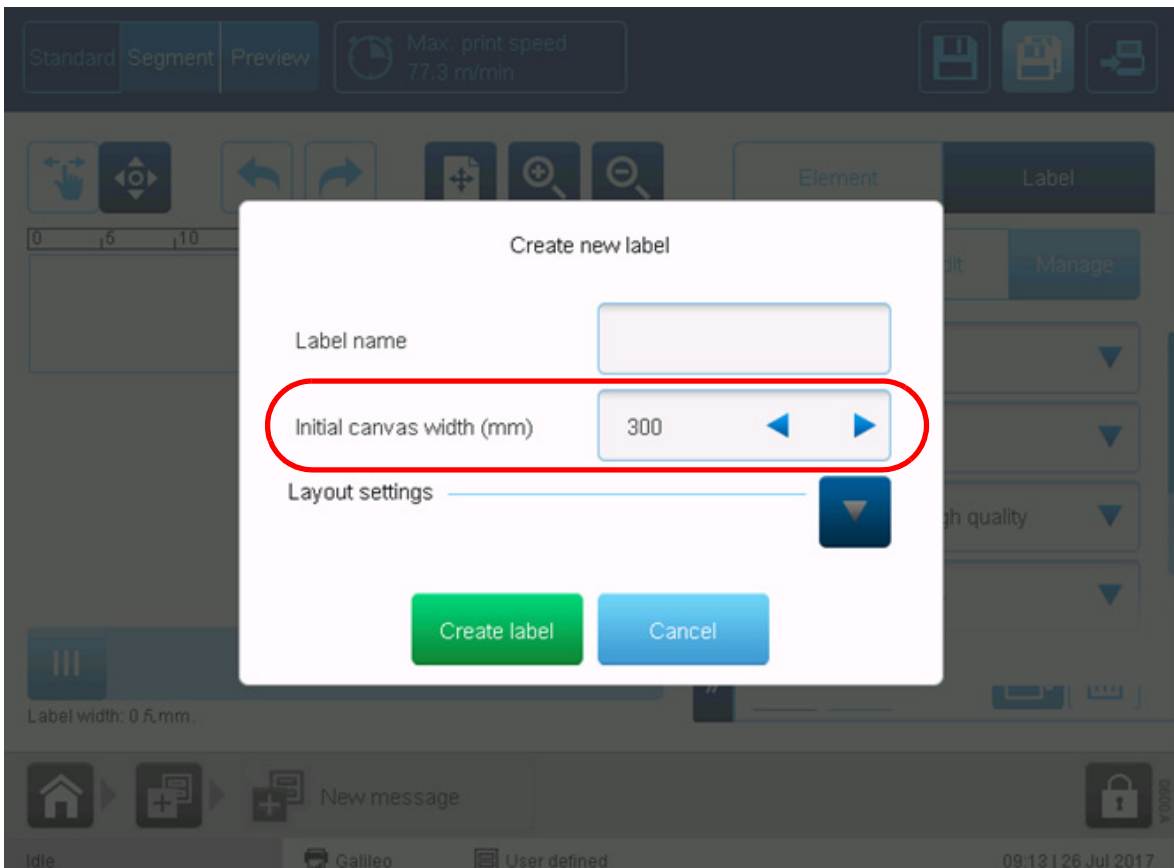
The label creator contains additional features to help users create long labels. The additional features are described on the next few pages of this document.

## Initial Canvas Width Setting


The initial canvas width setting defines the width of the label creator's canvas area. This setting is specified when a new label is created.

To specify the Initial canvas width setting:

- (1) From the TouchPanel's Home Screen, select *Label creator*.
- (2) Select *Blank*.
- (3) Select the *Label name* text box.
- (4) Use the on screen keyboard to enter a name which the label design will be saved as.
- (5) Select the green *Tick* icon.
- (6) Select the *Initial canvas width (mm)* setting and enter the initial canvas width value.



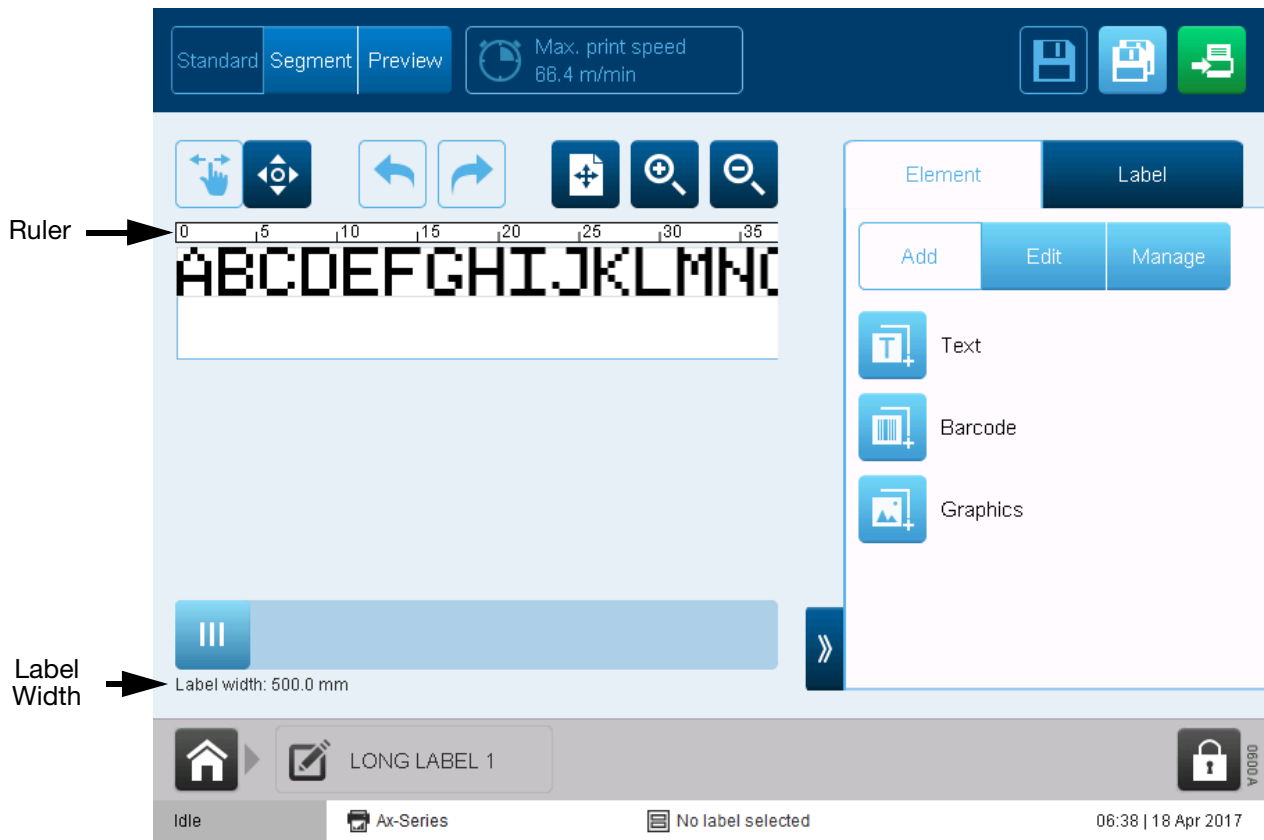
*Initial Canvas Width (mm) Setting*

- (7) Select the  icon to configure more label layout settings. Or, select *Create label* to continue to the label creator.

End of procedure.

## Label Measurement Ruler and Label Width Value

The label creator contains a metric ruler above the canvas area. The ruler enables the user to accurately place elements in the label design. The label width is also displayed on the label creator screen.



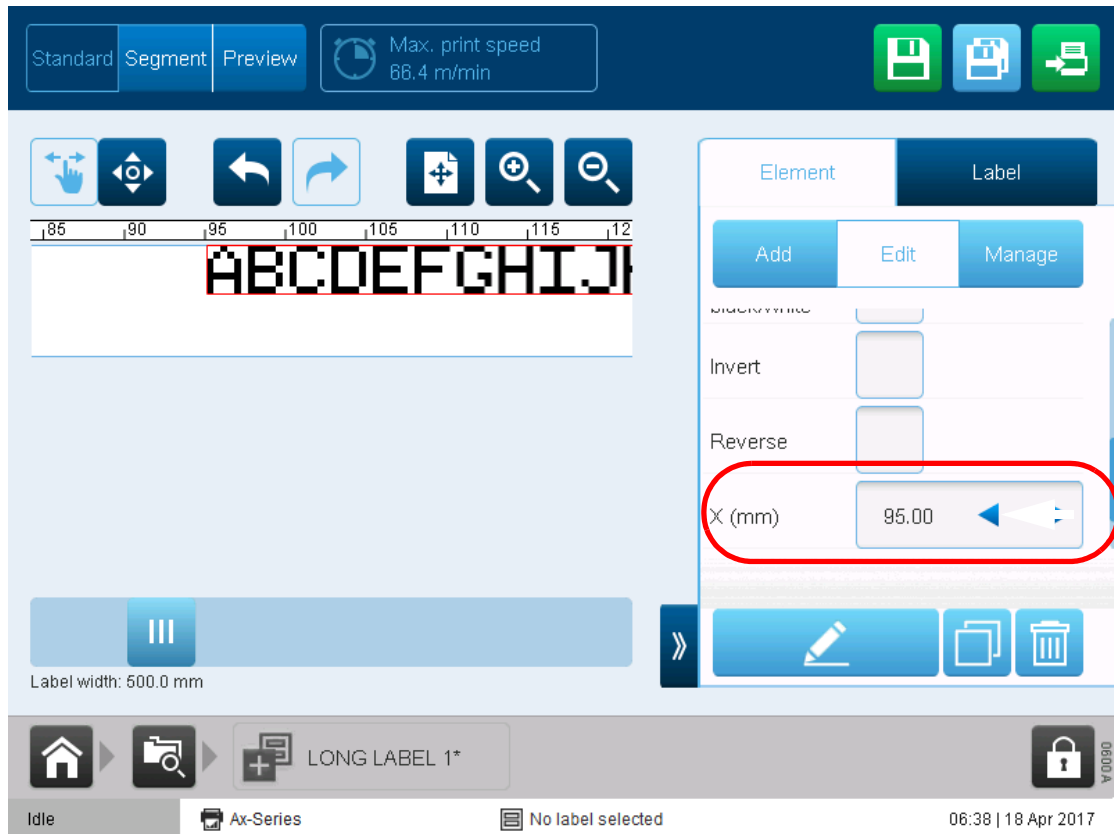
*Label Creator Screen*

## X (mm) (Element Position Setting)

The X (mm) setting enables the user to position an element at a specific location in the label. The X (mm) value is measured from the left side of the label to the left side of the element.

*Note: Some X (mm) values may not be possible. If the user specified X (mm) value is in between two print strokes, the printer will choose the closest possible X (mm) value.*

The screen shot below illustrates a text element with an X (mm) value of 95mm.



*X (mm) Setting*

To position a label element using the X (mm) setting:

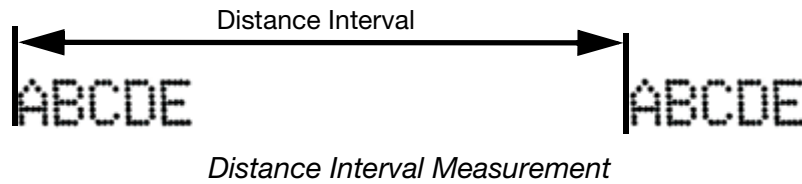
- (1) Select an element in the label.
- (2) In the label creator's side bar, select the *Element* menu and select *Edit*.
- (3) Scroll down to the *X (mm)* setting and select it.
- (4) Enter a new X (mm) value.
- (5) Select the green Save icon to save the change.

End of procedure.

## Label Distance Interval

Each label can be saved with its own distance interval value.

This setting defines the distance between each print on the print surface. The distance interval is measured in mm from the start of one label to the start of the next label.



When the label is sent to print, this value will overwrite the current distance interval that is set on the print optimisation screen and the print trigger screen. Also, if the print trigger is set to external, the print trigger will automatically change to internal.

To set the label's distance interval setting:

- (1) In the label creator's side bar, select the *Label* menu and select *Continuous*.
- (2) Tick the *Enable* tick box.
- (3) Select the *Distance interval (mm)* setting and change the value.

**Note:** Ensure the *Distance interval (mm)* value is greater than the label width.

The screenshot shows the 'Label' settings panel with the following details:

- Enable:**
- Distance interval (mm):** 600.0
- Label width:** 500.0 mm

### *Distance Interval (mm) Setting*

- (4) Select the green *Save* icon to save the change.

End of procedure.

# CONTINUOUS BACKGROUND COUNTING

The continuous background counting setting enables data in counters to continue updating if the printer stops due to a red alert but the production line continues.

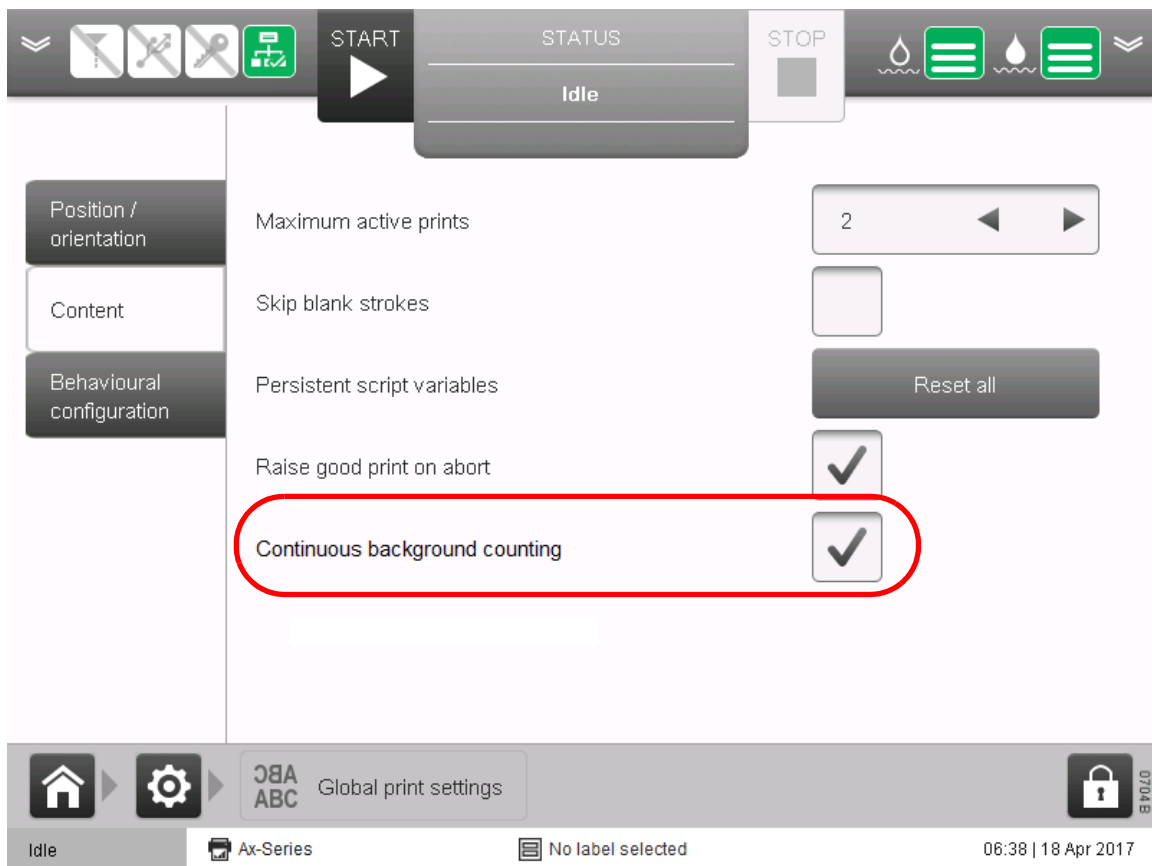
The counter data will continue to update as long as the printer receives valid print trigger and encoder signals. When the printer recovers from the alert the correct counter data will print as if the printer had never stopped.

This feature is useful if counters are used to mark distance values on the print surface.

*Note: This is a global print setting that will affect all labels in the printer.*

To enable continuous background counting:

- (1) Select *Home > Setup > Global print settings*.
- (2) Tick the *Continuous background counting* tick box.



*Continuous Background Counting Setting*

End of procedure.

# PRINT OPTIMISATION SETTINGS

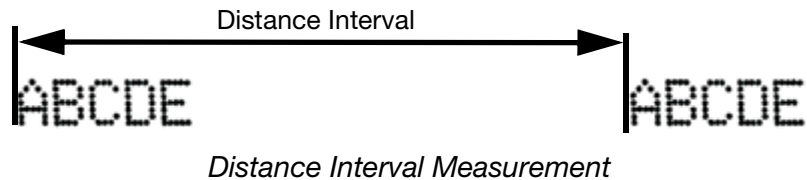
The settings available on the print optimisation screen enable the user to make quick adjustments to the labels appearance.

## Distance Interval Adjustment

*Note: This setting is only available if the print trigger is set to Internal.*

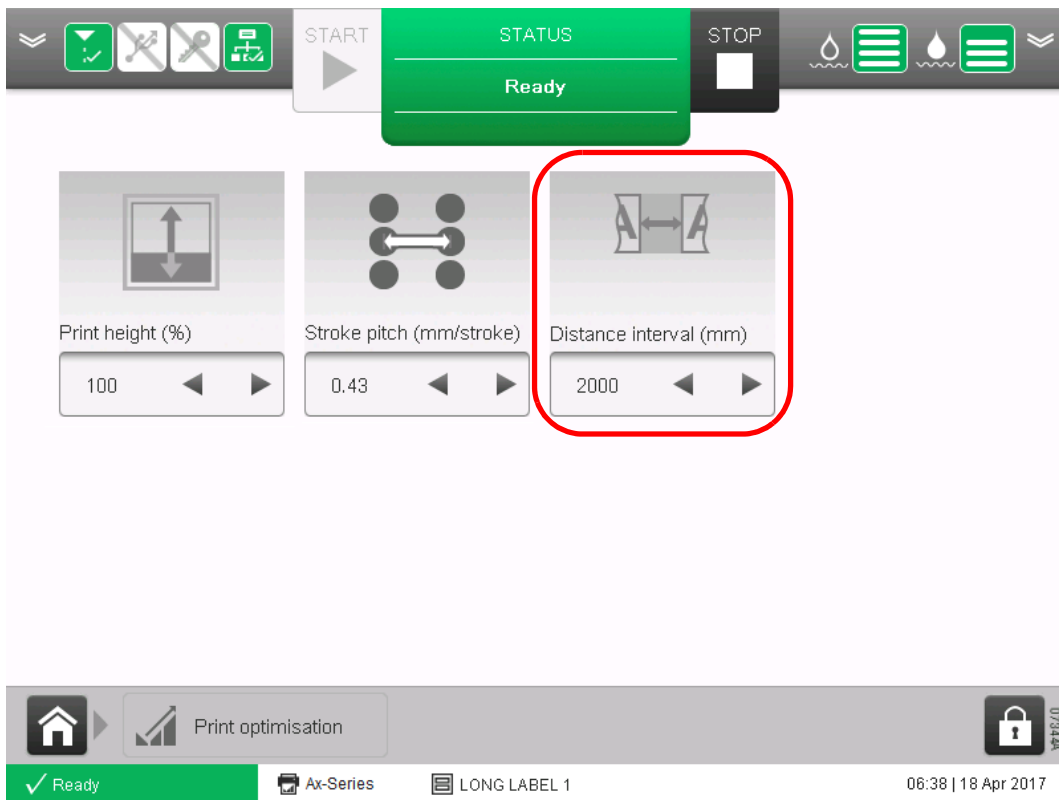
The distance interval setting enables the user to quickly adjust the distance between prints.

The distance interval is measured in mm from the start of one label to the start of the next label.



To adjust the distance interval setting:

- (1) From the Home screen, select *Print optimisation*.
- (2) Select the *Distance interval (mm)* setting and change the value.



End of procedure.

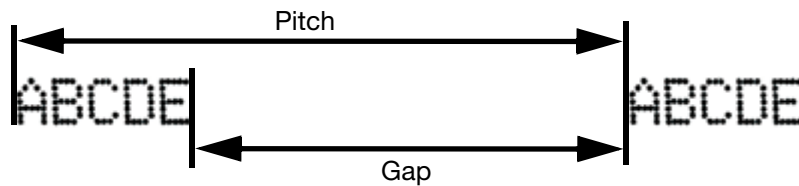
## Space Repeat

**Note:** This setting is only available if the label's "Repeat Mode" setting is set to "Counted" or "Continuous". Refer to the Ax-Series Product Manual for information about "Repeat Mode".

The space repeat setting enables the user to quickly adjust the distance between repeating labels.

If the label's *Repeat spacing mode* is set to *Space by pitch*; The *Space repeat* setting will adjust the distance in mm between the start of one repeating label and the start of the next repeating label.

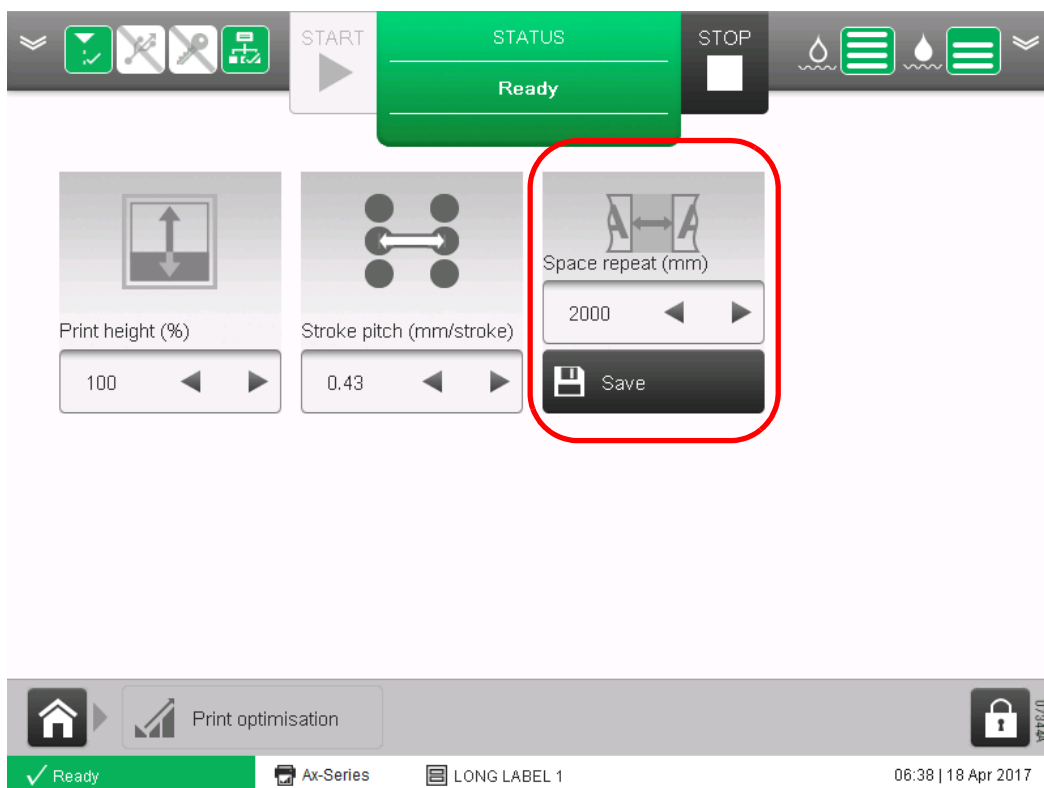
If the label's *Repeat spacing mode* is set to *Space by gap*; The *Space repeat* setting will adjust the distance in mm between the end of one repeating label and the start of the next repeating label.



*Space by Pitch or Space by Gap*

To adjust the space repeat setting:

- (1) From the Home screen, select *Print optimisation*.
- (2) Select the *Space repeat (mm)* setting and change the value.
- (3) Select *Save*.



*Space repeat (mm) Setting*

End of procedure.

## **ADDITIONAL RASTERS**

After installation of the continuous printing pack, a full set of ST and HS rasters will be available on the printer to meet the requirements of high speed printing applications. The new set of rasters are the same as those provided in the professional printing pack.