



# G20i Thermal Ink Jet Coder

Easy to use, all in one, single sided coding solution



### High quality print

Print up to 600x600dpi high resolution human and machine readable codes on paper, card, plastics, metal and more with Domino's inks.

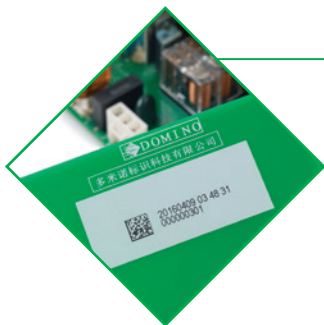
### Simple to use

Line side control of the G20i is simple: connect either on a mobile device, use the keyboard or link to a PC. The integrated photocell automatically starts the print cycle.



### Engineered solutions

The G20i supports database communication enabling unique item level coding for promotional and anti-counterfeit tracking applications.



### Compact and versatile

The small footprint of the G20i makes it easy to install within existing production lines. Remote control via Bluetooth app or PLC helps to meet tough space and access restrictions.



### Powerful label designer

Easily create and save your labels on any device with the web browser based label designer. Load the required label to the G20i via USB – dynamic fields are automatically updated.



The G20i is ideally suited to high resolution coding on the wide range of packaging materials used in FMCG industries.

Domino. Do more.

# Simple to Install. Simple to Configure. Simple to Code.

The Domino **G20i** is highly cost efficient, with simple self install that does not require specialist installation engineers. The all in one package provides everything you need to get your line up and running. The maintenance free configuration does not require any service contracts. The **G20i** is a versatile coding solution on many substrates like paper, card, plastic, metal, films and foils.



## Technical Specification: **G20i**

### Coding options

Graphics, alphanumeric texts; QR and 1D barcodes (grade B) - Code 39, Code 2/5, Code 128, UPC-A Code 93, EAN 8, Codabar, Code 11

### Font sizes

Font heights - 1 line = 12.7mm, 2 line = 5.92mm, 3 line = 3.83 mm, 4 line = 2.54mm, 6 line = 1.69mm

### Print head

1 embedded print head

### Print height

12.7 mm / 0.5"

### Print speed

Constant print speed from 180m/min (590 ft/min) at 100 dpi to 30m/min (98 ft/min) at 600 dpi (horizontal resolution)

### Photocell

Embedded photocell

### Digital outputs

3 status outputs (24V)

### User interfaces

71.12mm, 256K colour WYSIWYG entry, PC (Windows) App, or Android based application  
Android App languages: English (default), Simplified Chinese, French, German, Spanish, Russian, Portuguese, Korean, Polish, Vietnamese. Thai, Indonesian (Bahasa), Japanese

### External memory

USB 2.0

### On board controller languages

English (default), Simplified Chinese, French, German, Spanish, Russian, Portuguese, Korean, Polish and Vietnamese

### Controller dimensions

Width: 74.5mm / Depth: 83mm / Length: 107.5mm / Weight: 450g

### Range Specifications

Construction Powder coated steel  
Operating voltage 100 - 240 VAC  
Amperage 1.4A  
Frequency 50 - 60Hz  
Operating temperature +5°C to 50°C (dependant on ink properties)

### Operating relative humidity

10% to 90% non condensing

### Inks

A range of fast drying water and solvent based inks for porous and non-porous substrates

### G-Series i-Tech features

Automatic ink cartridge detection, automatic ink parameter setting, automatic ink level recording

